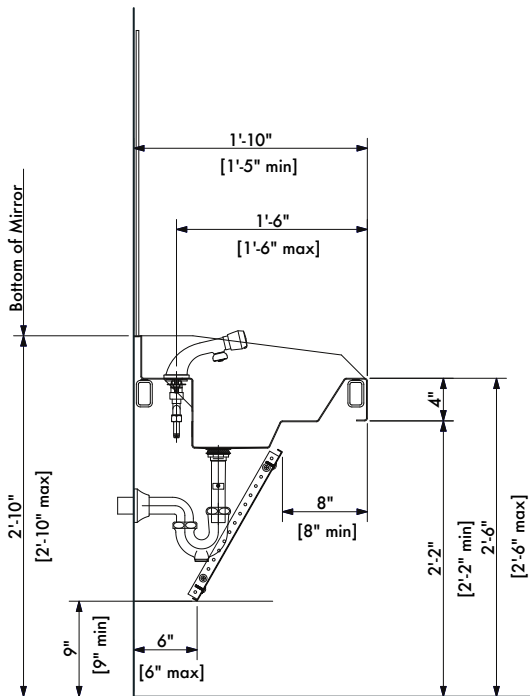
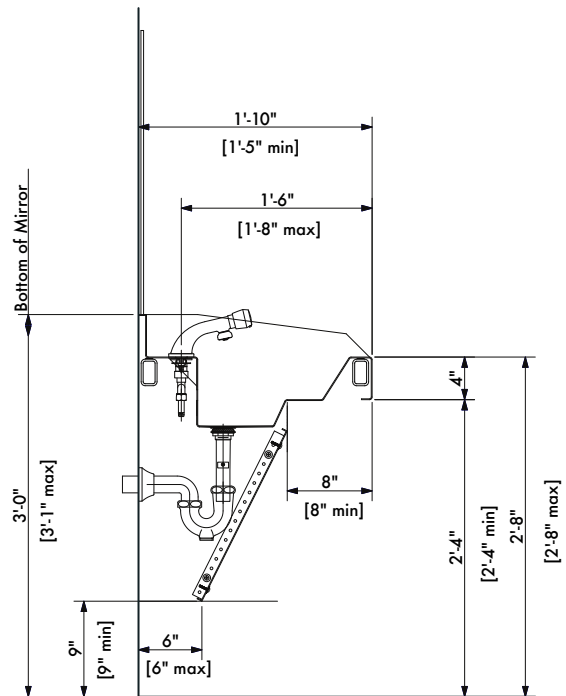


ADA Compliance

Youth Profile for Children



Ages 4 to 10 or 11



Ages 11 to 14 or 15

If your project needs to accommodate children, our unique Youth Profile allows accessibility for children. The current design is within the standards of the State of Texas (Texas Accessibility Standards) using manual operation. ADAAG compliance can be achieved using sensor faucets. To specify a youth profile, Add a "Y" to the Width designation, for example S3142Y indicates a Single Width, Youth Profile, three faucet holes, one drain, four inch centers on faucet holes and no options.